



## 7 SANDMOOR CLOSE

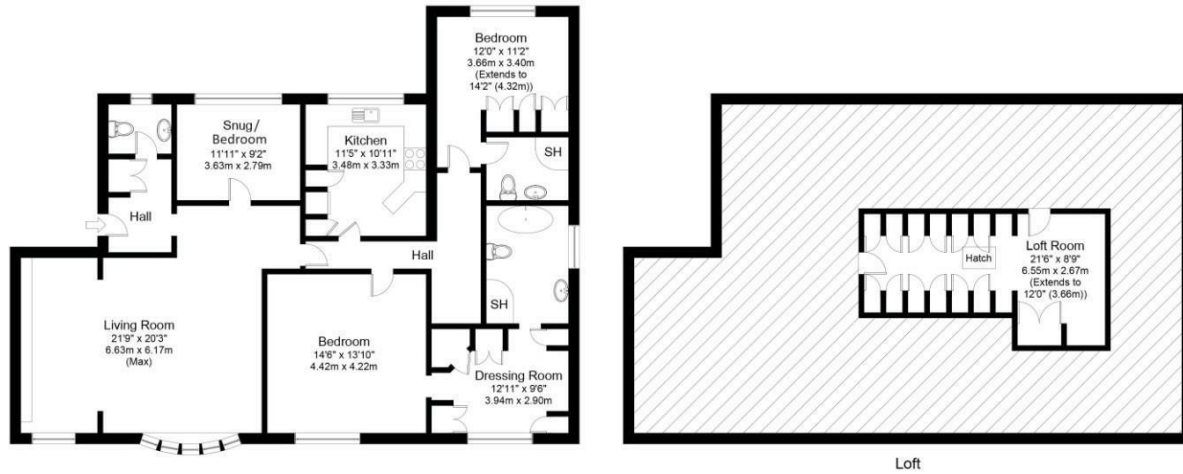
LEEDS, LS17 7RP

£475,000  
LEASEHOLD

**\*\*CHAIN FREE\*\*** Welcome to this stunning apartment located on the prestigious Sandmoor Close in Alwoodley including a rare double electric garage with an abundance of storage available.

MONROE

SELLERS OF THE FINEST HOMES



Gross internal floor area excluding loft (approx.): 139.7 sq m (1,504 sq ft)  
 Loft Room Gross internal floor area (approx.): 20.6 sq m (222 sq ft)  
 Combined Gross internal floor area (approx.): 160.4 sq m (1,726 sq ft)  
 For illustrative purposes only. Not to Scale. Copyright © Zenith Creations.

Energy Efficiency Rating		
	Current	Potential
Very energy efficient - lower running costs		
(92 plus) <b>A</b>		
(81-91) <b>B</b>		
(69-80) <b>C</b>	<b>77</b>	<b>77</b>
(55-68) <b>D</b>		
(39-54) <b>E</b>		
(21-38) <b>F</b>		
(1-20) <b>G</b>		
Not energy efficient - higher running costs		
<b>England &amp; Wales</b>	EU Directive 2002/91/EC	

Agents Note: Whilst every care has been taken to prepare these particulars, they are for guidance purposes only. All measurements are approximate and are for general guidance purposes only and whilst every care has been taken to ensure their accuracy, they should not be relied upon and potential buyers/tenants are advised to recheck the measurements

Alwoodley Sales  
 716 King Lane Alwoodley  
 Leeds  
 West Yorkshire  
 LS17 7BA

0113 870 4443  
 hello@monroestateagents.com  
 www.monroestateagents.com

MONROE

SELLERS OF THE FINEST HOMES